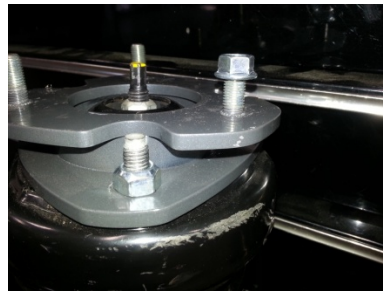


2015 FORD F-150

***IF INSTALLING THIS LEVELING KIT ON A 2015 F-150, THE FACTORY FLANGE NUTS CAN NOT BE USED BECAUSE THEY COME INTO CONTACT WITH THE BODY OF THE SPACER. PROVIDED IS A SET OF M10-1.5 STOVER NUTS THAT WILL BE USED ON THE FACTORY STUDS AND M10-1.25 FLANGE NUTS TO BE USED ON THE SPACER STUDS.**



***WITH THIS SPACER INSTALLED, THE SPINDLE WILL COME INTO CONTACT WITH THE COIL WHEN THE SUSPENSION IS AT FULL DROOP. THIS WILL “NOT” OCCUR UNDER NORMAL DRIVING CONDITIONS, ONLY WHEN THE VEHICLE IS LIFTED COMPLETELY OFF THE GROUND**

